



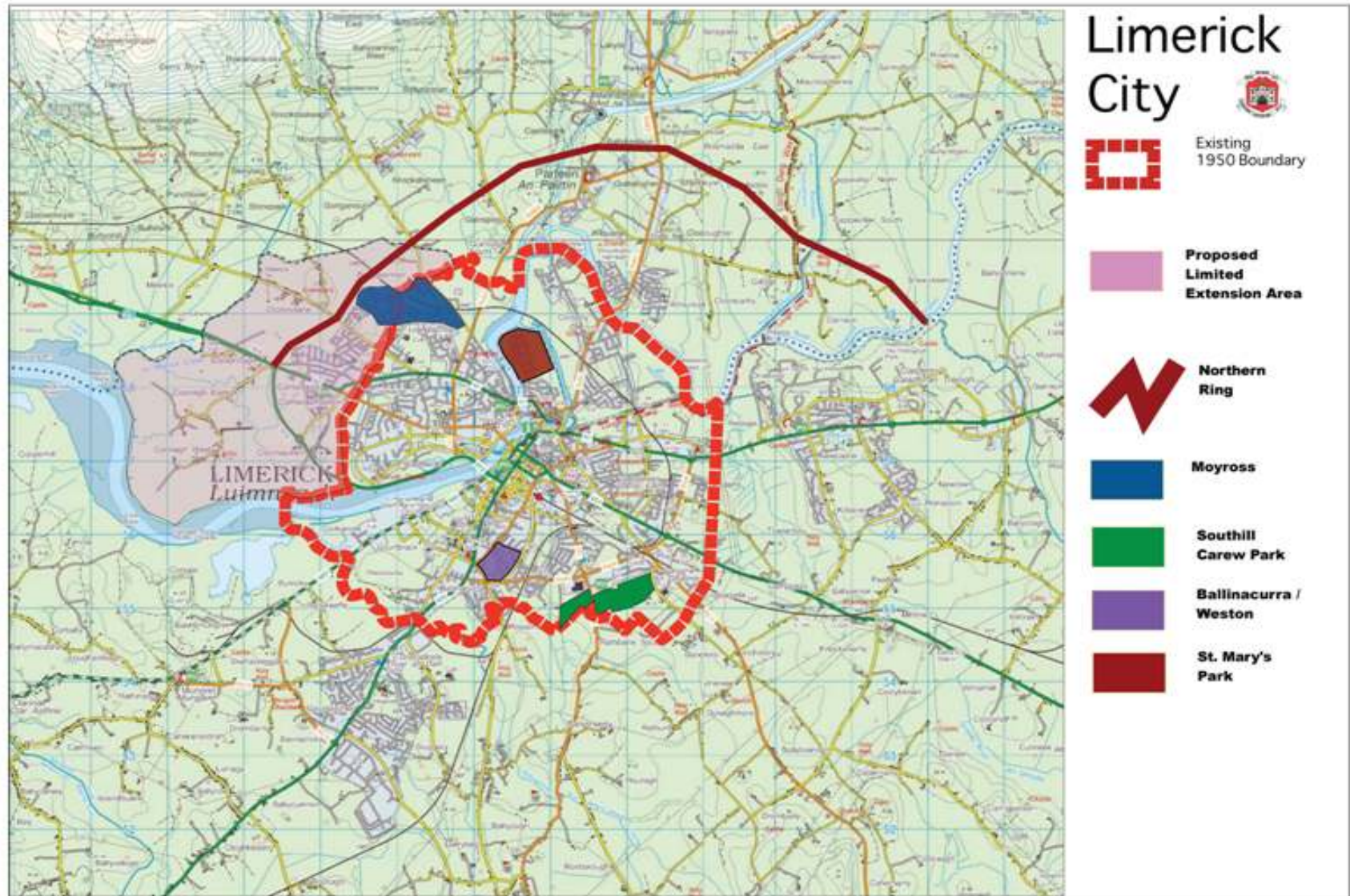
Appendices



Appendix 1

Limerick City Map

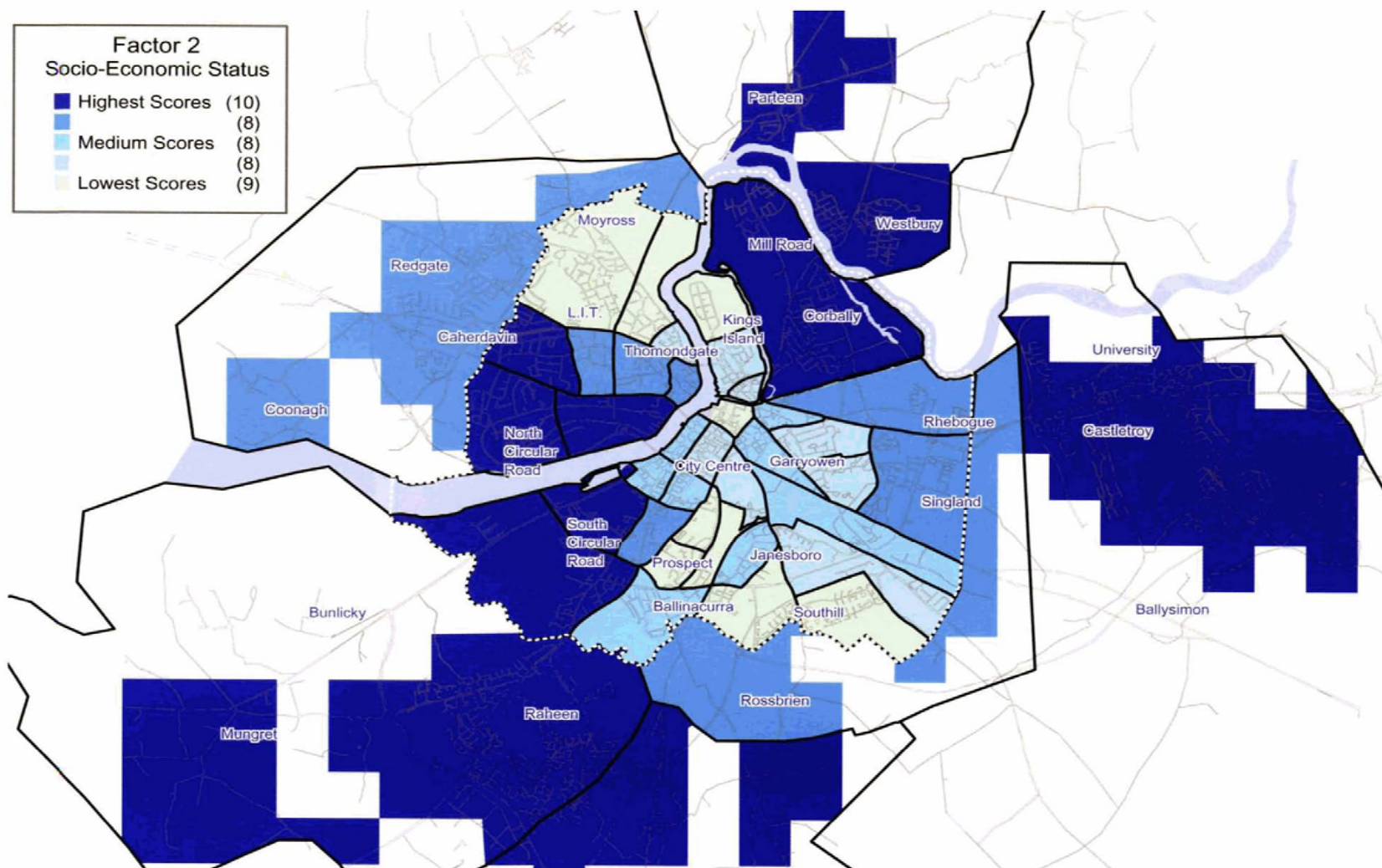
Limerick City Map



Appendix 2

Limerick City Socio-Economic Status

Socio-Economic Status



Source: Prof. Des McCafferty, Mary Immaculate College

Appendix 3

Social Housing by Major Urban Area

Social Housing by City

Local Authority	LA Occupied Stock*	LA Vacant Stock*	Tenant Purchase/Outright Purchase*	Total Occupancy Census 2002**	% of LA Totals compared to CSO Figures
Cork City	7,391	319	6,784	42,647	34%
DLRCC	4,217	146	5,855	64,071	16%
Dublin City	24,570	2,117	10,999	180,661	21%
Fingal	3,607	55		60,460	6%
Galway City	1,820	97		21,019	9%
Kilkenny	503	15	72	6,993	8%
Limerick City	2,997	189	4,610	18,902	41%
Sligo	917	54	1,279	6,750	33%
South Dublin	7,532	32	1,931	73,218	13%
Waterford City	2,647	40		15,287	18%

collins_t:
Figures are for Kilkenny Borough Council only.

collins_t:
Figure represents total housing stock of Borough Council. It is not clear if it includes vacancies.

collins_t:
Figures are for Sligo Borough Council only.

collins_t:
Figure represents total housing stock of City Council. It is not clear if it includes vacancies.

* Figures have been extracted from LA Housing Action Plans 2004-2008

** Figures are taken from 2002 Census Figures on www.eirestat.cso.ie.

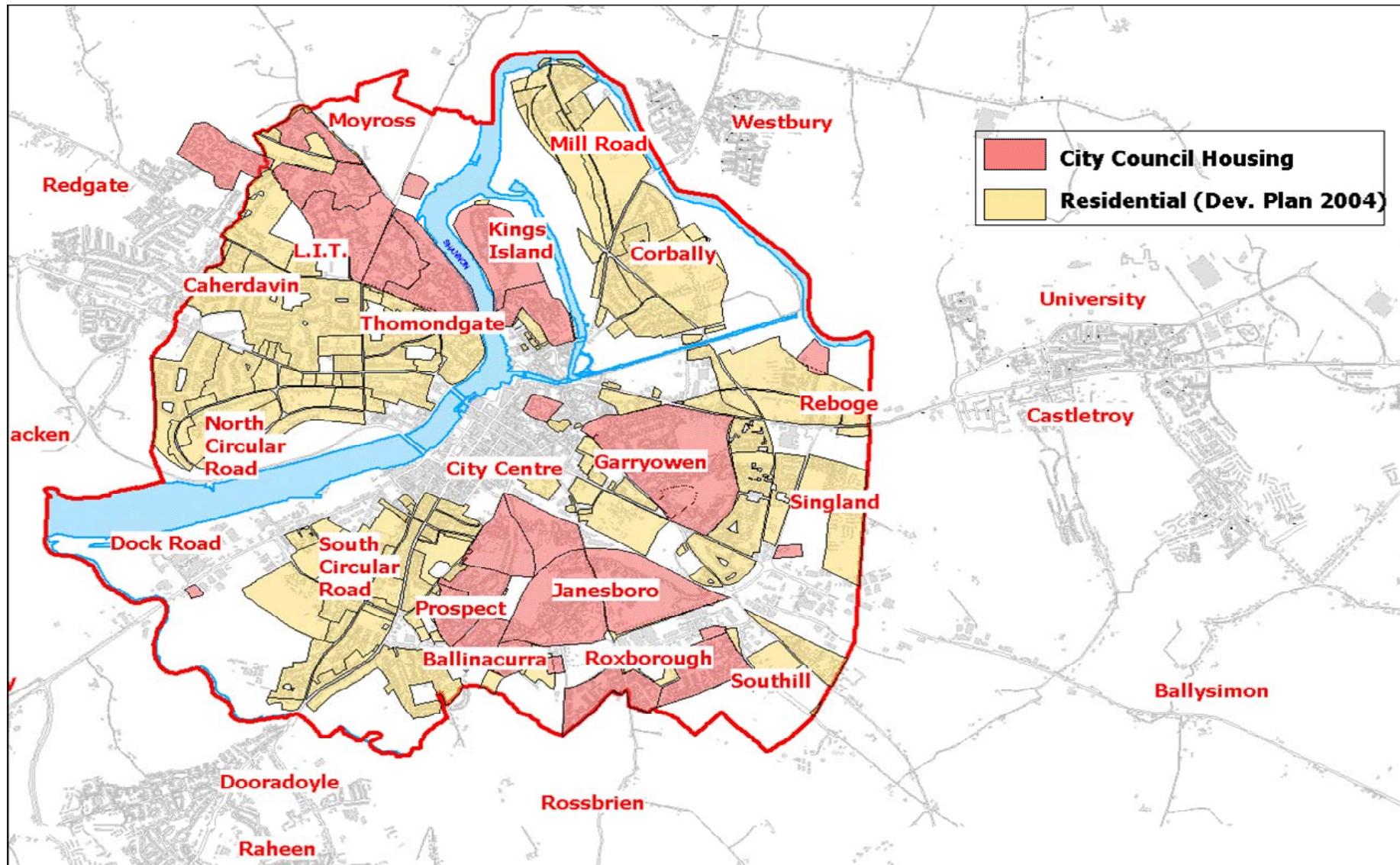
** Figures from Table 19 were used in all cases, except Kilkenny & Sligo, where Town figures from table 20 were used. Table 19 provides figures on 'Private Dwellings in permanent housing units in each Province, County and City', while Table 20 provides figures on 'Private dwellings in permanent housing units in each town'

Source: Department of the Environment, Heritage & Local Government

Appendix 4

Map of Social Housing in Limerick City

Map of Social Housing



Source: Limerick City Council

Appendix 5

Photographs Moyross &
O'Malley Park, Southill

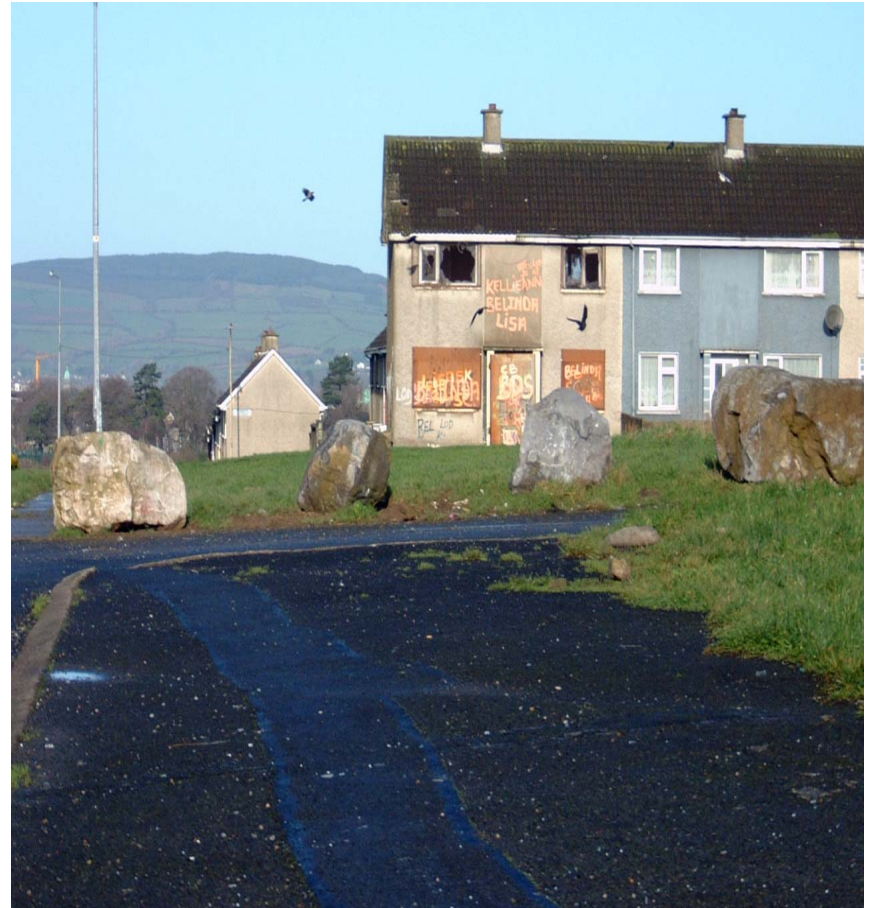
Photographs of Moyross



O'Malley Park Photographs



O'Malley Park Photographs



O'Malley Park Photographs



Appendix 6

Previously Refurbished Houses

Previously refurbished



Boarded up houses at Castleoaks, O Malley Park, Southill which were the subject of a remedial works scheme in 1999

Appendix 7

Retails Rents:
City vs Suburbs

Table of Rents

Retail Rents - City versus Suburbs



Source: Lisney